

# dl CABINETS



Jacksonville FL:  
3251 Newell Blvd, Jacksonville FL 32216,  
Tel: 904-723-1061  
Email: jacksonville@dlcabinetry.com

Orlando FL:  
7025 W Colonial Drive, Orlando FL 32818  
Tel: 407-420-7592  
Email: orlando@dlcabinetry.com

Tampa FL:  
5433 W Sligh Ave Suite 110, Tampa FL 33634  
Tel: 813-243-5552  
Email: tampa@dlcabinetry.com

New Orleans LA:  
6101 Chef Menteur Hwy, New Orleans LA 70126  
Tel: 504-245-2426  
Email: neworleans@dlcabinetry.com

Austin TX:  
2200 Denton Dr Suite 105, Austin TX 78758  
Tel: 512-465-2726  
Email: austincabinetry@gmail.com

Nashville TN:  
1421 Gould Dr, suite D, La Vergne TN 37086  
Tel: 615-969-7850  
Email: nashville@dlcabinetry.com





# WHITE SHAKER

## Bright, Simple, and Modern

Our most popular style. Transform your space into a modern haven, where the clean lines and bright finish create a fresh and inviting atmosphere for your home.







White Shaker 's distinct design is characterized by clean and simple lines making it a perfect choice for those looking to achieve a clean and uncluttered look. The absence of harsh lines in the door design makes it suitable for traditional and modern design aesthetics.





# DARK CARAMEL

Rich, Stylish, and Timeless

Our Dark Caramel cabinets bring warmth and richness to any space. Elevate your kitchen with the luxurious allure of deep caramel tones, creating a welcoming and stylish focal point that embodies both contemporary design and classic sophistication.







The dark and warm tones make it a versatile option blending effortlessly with contemporary, traditional and rustic styles. Its deep and inviting hue creates a cozy and comfortable environment, transforming any space into a soulful retreat.

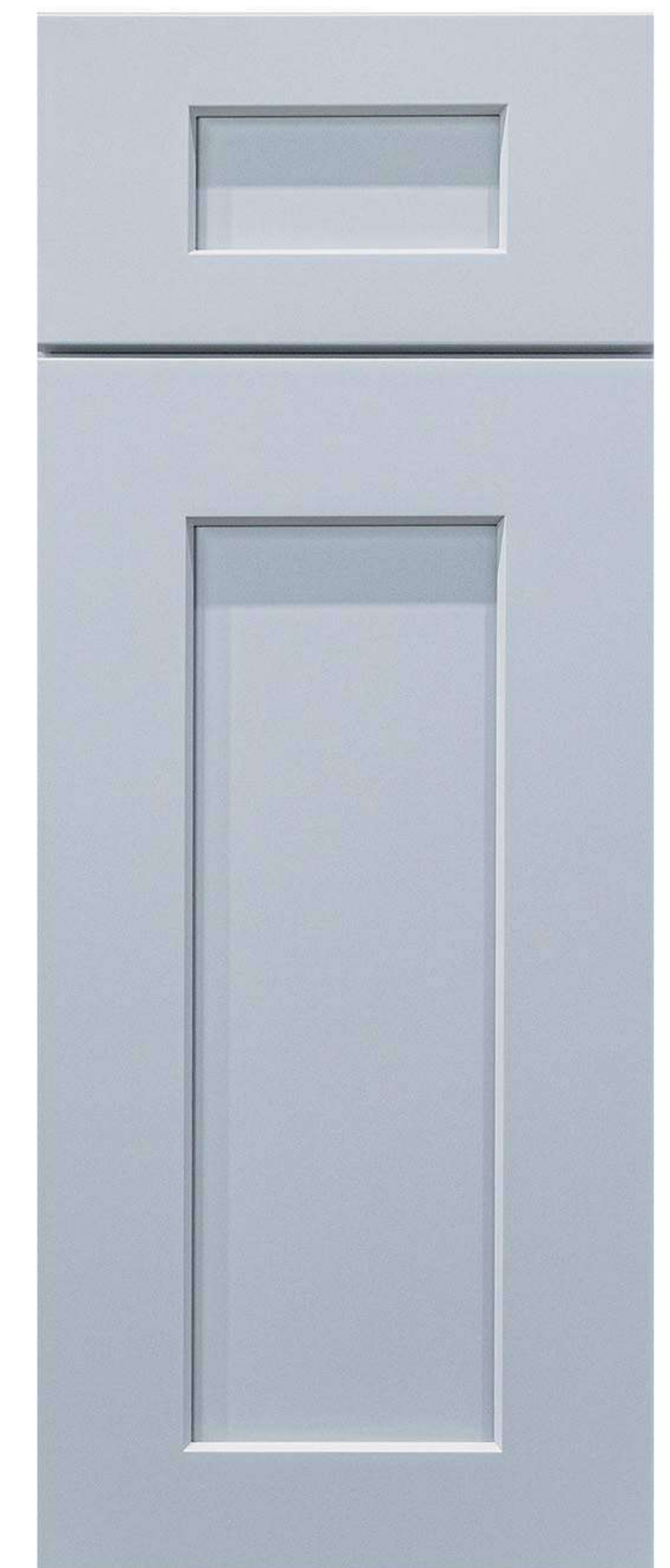




# DOVE GREY

## Soft, Clean, and Fresh

Our second most popular style adds a sense of quiet sophistication to any space. It can be used as the primary color throughout the kitchen, or as a muted accent when combined with other cabinet styles or colors.







Dove Grey offers a sophisticated alternative to bright white, transforming your kitchen into an oasis of calm.

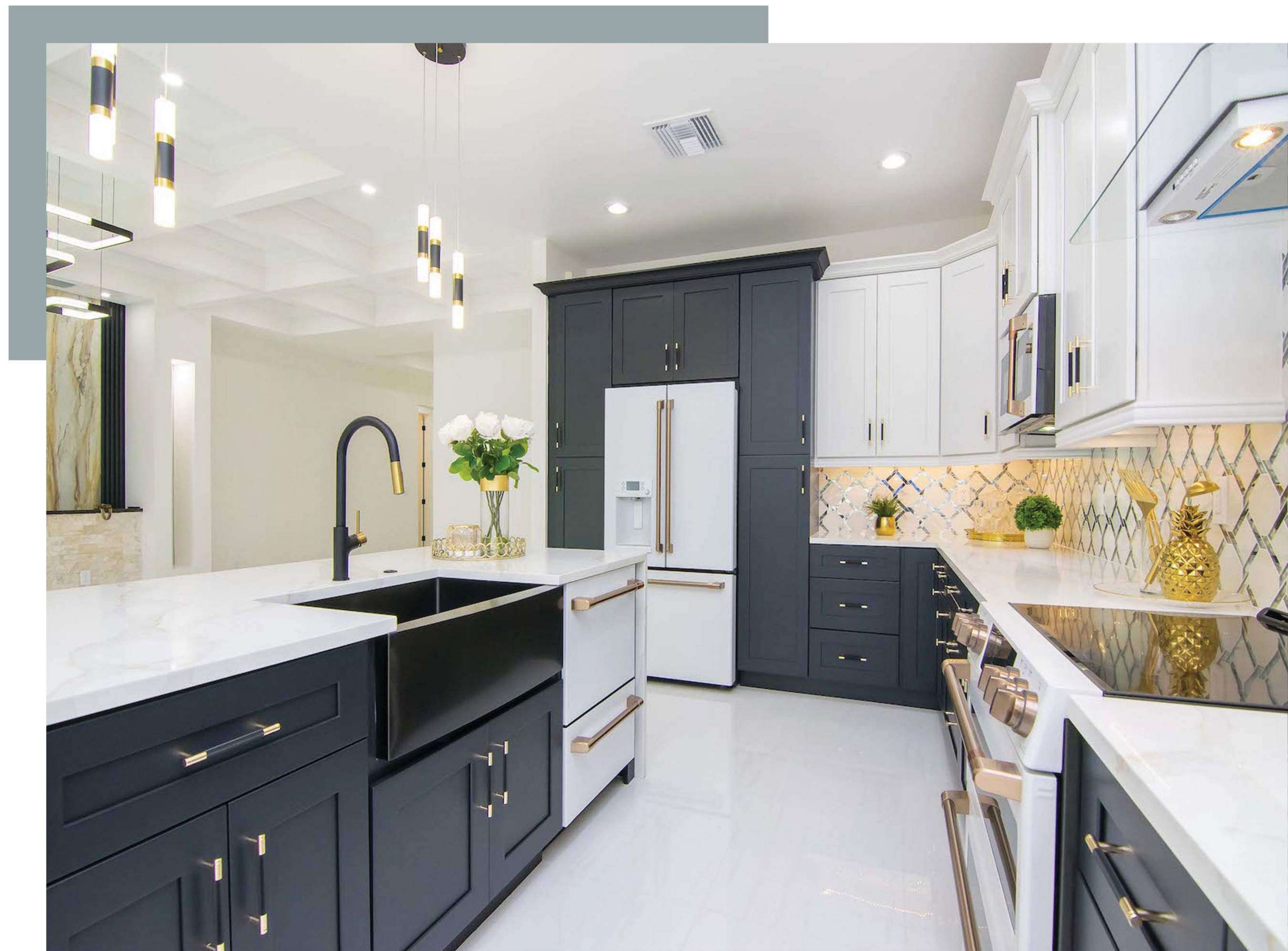
Whether used as the central theme or a subtle accent, Dove Grey cabinets bring a sense of refinement and tranquility to your home.



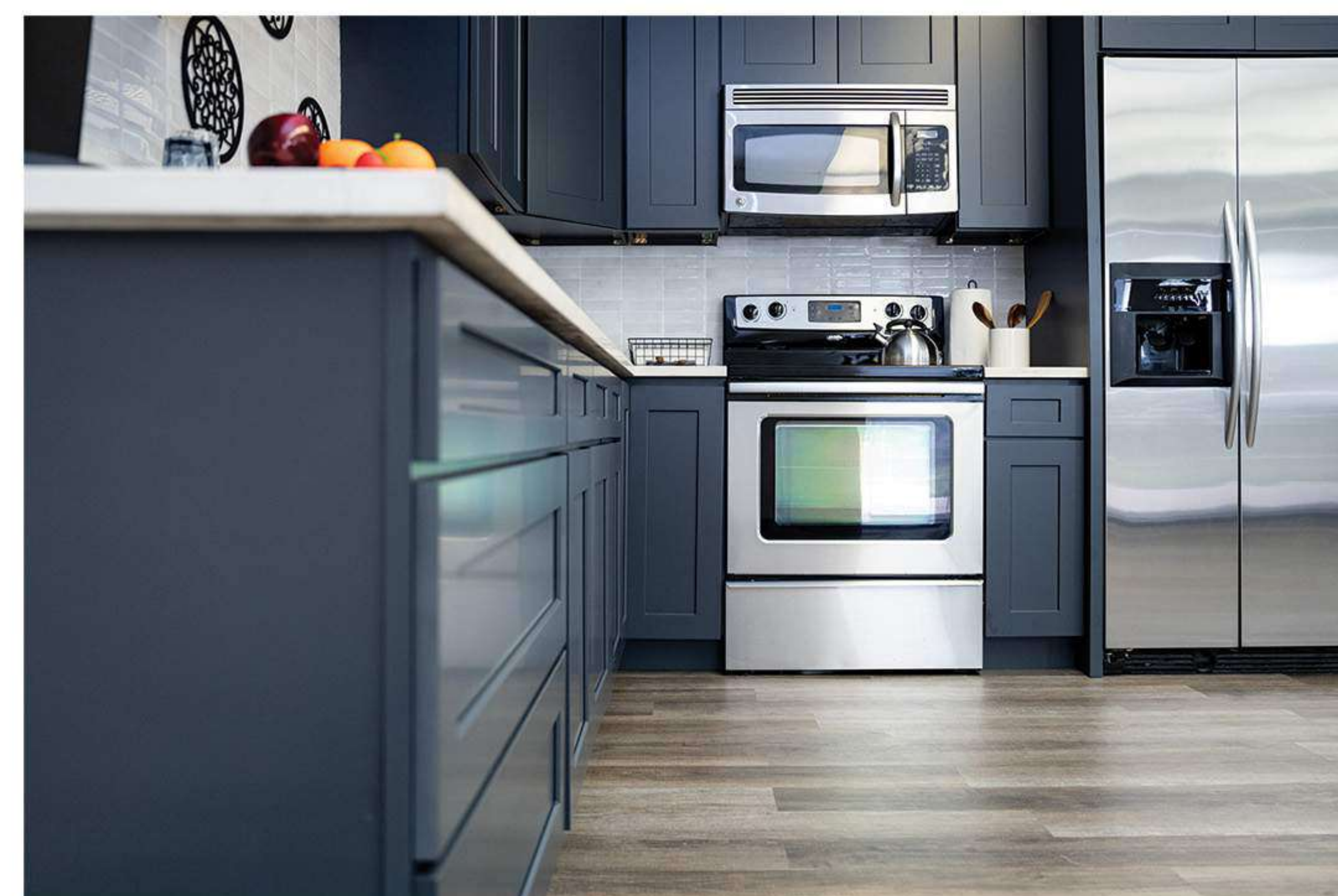
# CYBER GREY

## Contemporary, Sleek, and Sophisticated

Our Cyber Grey Shaker cabinets boast a sleek and contemporary design, seamlessly merging modern aesthetics with classic Shaker-style simplicity. The deep, rich hue of Cyber Grey adds a touch of sophistication to any kitchen, creating a stylish and timeless atmosphere.









# ESPRESSO SHAKER

## Exotic, Bold, and Sharp

The Espresso Shaker represents the darkest stain option in your cabinet collection. Espresso Shaker adds sophistication and intrigue to any space.







The deeply beveled doors add depth creating a unique look that sets Espresso apart from the typical shaker style. In direct sunlight, the stain projects an exotic red hue.

Whether it is used in a kitchen, bathroom, studio or built-in, Espresso Shaker is sure to make a statement in your home.





# GLACIER WHITE

Charming, Formal,  
and Vintage

Our Glacier White cabinets exude timeless elegance with their raised panel detailing, adding a touch of sophistication to any kitchen.







Our Glacier White cabinet represents the middle ground between the simplicity of the shaker design and the more intricate raised panel designs.

Striking a balance between modern and vintage design elements, it's perfect for those who want to maintain a consistent and bright color scheme while introducing a unique vintage door design. The blending of features makes Glacier White a versatile choice that can enhance the charm of bathrooms, kitchens, or any area in need of cabinets within your home.





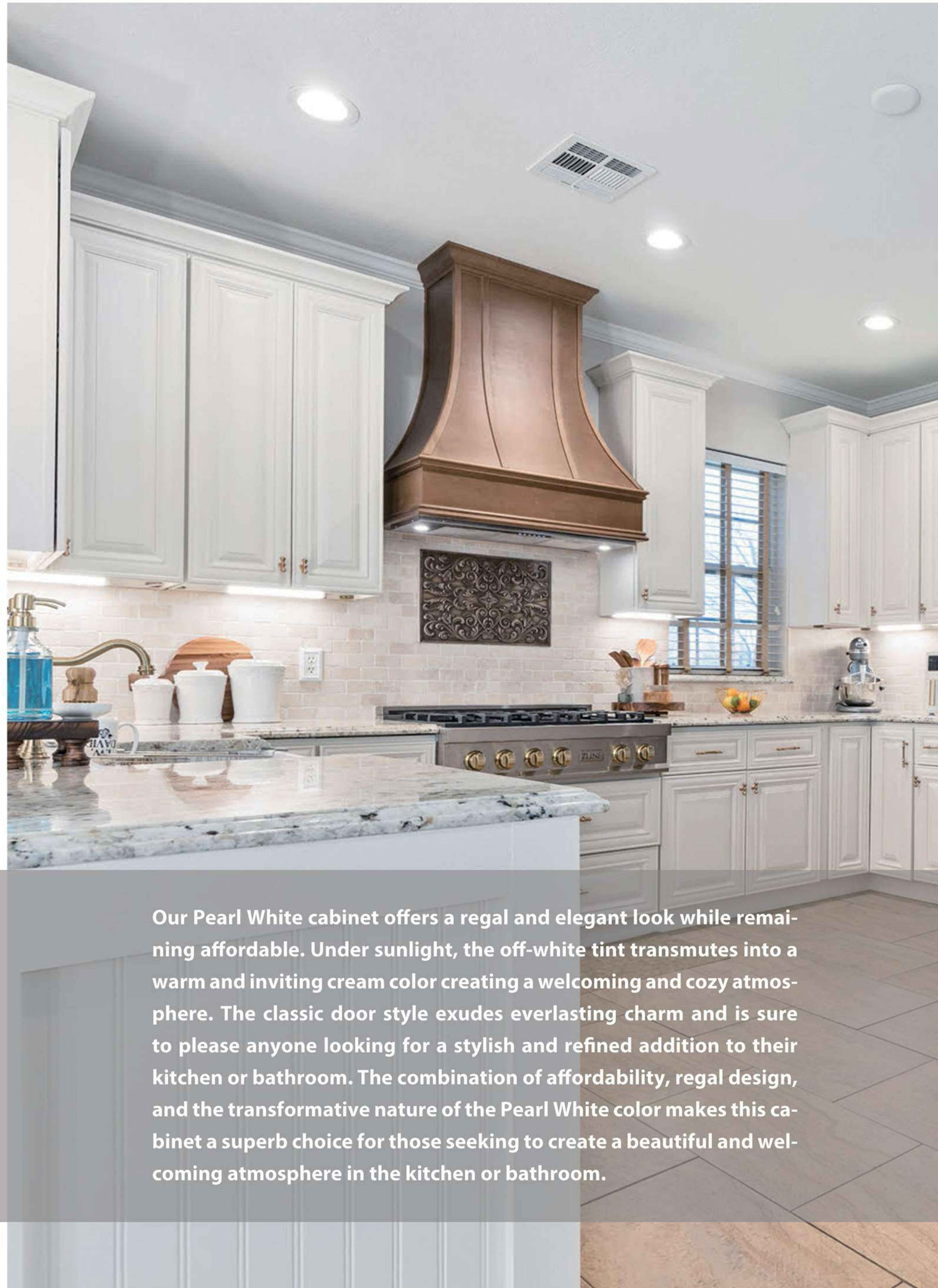
# PEARL WHITE

## Elegant, Warm, and Classic

Our Pearl White cabinets offer a luxurious and refined look with their exquisite raised panel detailing, elevating the elegance of any kitchen space. The lustrous pearl white finish adds a touch of opulence, creating a sophisticated ambiance that seamlessly blends traditional charm and contemporary style.







Our Pearl White cabinet offers a regal and elegant look while remaining affordable. Under sunlight, the off-white tint transmutes into a warm and inviting cream color creating a welcoming and cozy atmosphere. The classic door style exudes everlasting charm and is sure to please anyone looking for a stylish and refined addition to their kitchen or bathroom. The combination of affordability, regal design, and the transformative nature of the Pearl White color makes this cabinet a superb choice for those seeking to create a beautiful and welcoming atmosphere in the kitchen or bathroom.







# VERSA SHAKER

## Natural, Versatile, and Vogue

Versa Shaker, a canvas for your personalized design vision. Whether you prefer a rustic farmhouse aesthetic or a sleek modern look, the natural charm and adaptability of these cabinets allow you to infuse your space with character and warmth, making any kitchen uniquely yours.







Our Versa Shaker cabinet is perfect for those who appreciate the authenticity of natural materials. Designed to cater to those seeking alternatives beyond traditional painted and stained finishes.



The raw wood can be sealed and installed as is, allowing the wood's natural beauty to take center stage while maintaining a contemporary vibe.

Whether you're aiming for a traditional, rustic, or a more modern aesthetic, the Versa Shaker cabinet provides the foundation for your vision to come to life.





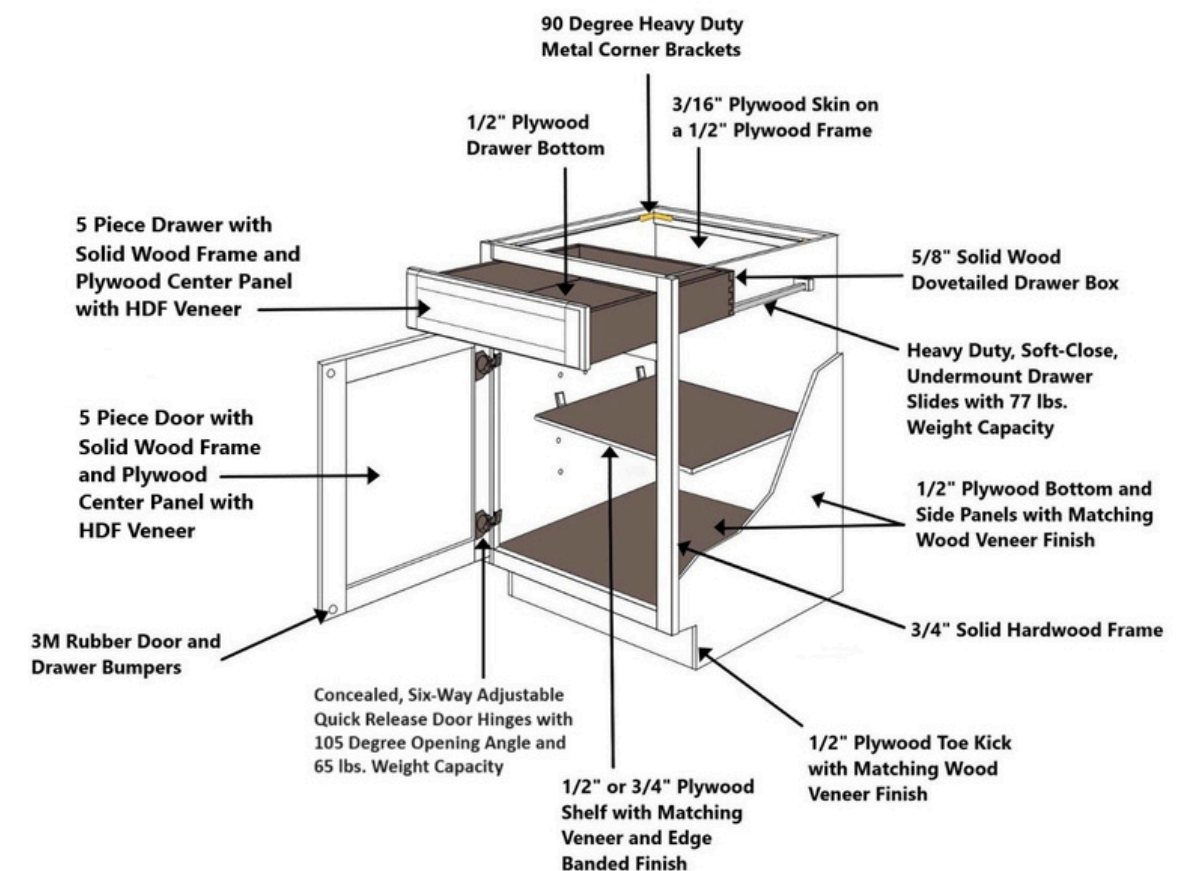
# New Slim Shaker Collection

# New Slim Shaker Collection

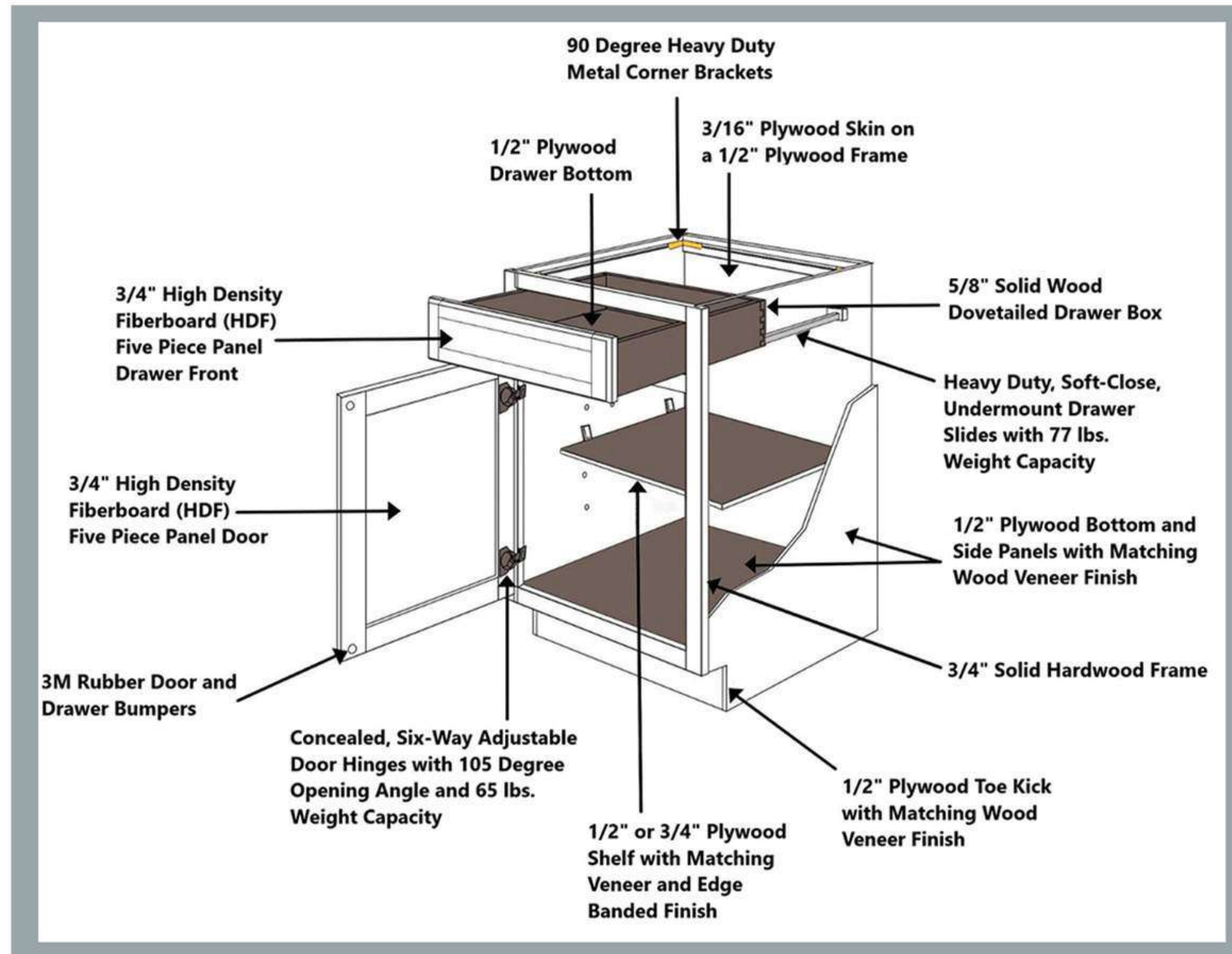


Slim Shaker Alabaster

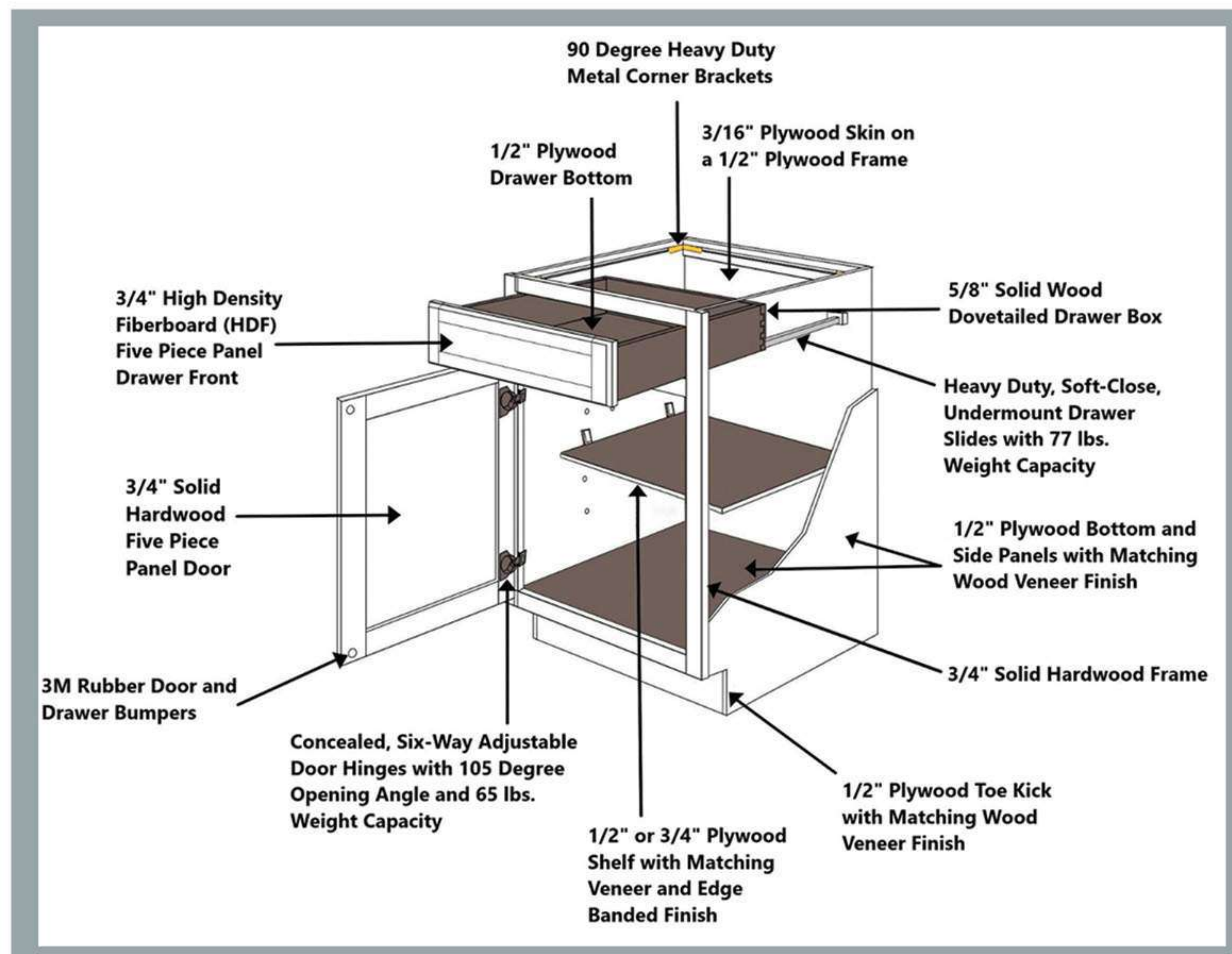
Slim Shaker Ebony







Base Cabinet Construction (HDF Door)



Base Cabinet Construction (Wood Door)

Sink Base Cabinets							
Image	Product	Width	Height	Depth	Doors	Drawers	Shelves
	SB30	30"	34 1/2"	24"	2	1 (False)	0
	SB36	36"	34 1/2"	24"	2	2 (False)	0
	FSB36	36"	34 1/2"	24"	2	0	0

Full Height Door Base Cabinets							
Image	Product	Width	Height	Depth	Doors	Drawers	Shelves
	FDB18	18"	34 1/2"	24"	1	0	1
	FDB21	21"	34 1/2"	24"	1	0	1
	FDB24	24"	34 1/2"	24"	2	0	1
	FDB27	27"	34 1/2"	24"	2	0	1
	FDB30	30"	34 1/2"	24"	2	0	1
	FDB33	33"	34 1/2"	24"	2	0	1
	FDB36	36"	34 1/2"	24"	2	0	1



Standard Base Cabinets							
Image	Product	Width	Height	Depth	Doors	Drawers	Shelves
	B09	9"	34 1/2"	24"	1	1	1
	B12	12"	34 1/2"	24"	1	1	1
	B15	15"	34 1/2"	24"	1	1	1
	B18	18"	34 1/2"	24"	1	1	1
	B21	21"	34 1/2"	24"	1	1	1
	B24	24"	34 1/2"	24"	2	1	1
	B27	27"	34 1/2"	24"	2	1	1
	B30	30"	34 1/2"	24"	2	1	1
	B33	33"	34 1/2"	24"	2	2	1
	B36	36"	34 1/2"	24"	2	2	1
	B39	39"	34 1/2"	24"	2	2	1
	B42	42"	34 1/2"	24"	2	2	1

Drawer Base Cabinets							
Image	Product	Width	Height	Depth	Doors	Drawers	Shelves
	2DB30	30"	34 1/2"	24"	0	2	0
	2DB33	33"	34 1/2"	24"	0	2	0
	2DB36	36"	34 1/2"	24"	0	2	0
	DB12	12"	34 1/2"	24"	0	3	0
	DB15	15"	34 1/2"	24"	0	3	0
	DB18	18"	34 1/2"	24"	0	3	0
	DB21	21"	34 1/2"	24"	0	3	0
	DB24	24"	34 1/2"	24"	0	3	0
	DB27	27"	34 1/2"	24"	0	3	0
	DB30	30"	34 1/2"	24"	0	3	0
	DB36	36"	34 1/2"	24"	0	3	0

Corner Base Cabinets							
Image	Product	Width	Height	Depth	Doors	Drawers	Shelves
	BBC33-9	33"	34 1/2"	24"	1	1	1
	<b>Note: Cabinet must be installed 9" from the wall.</b>						
	LZS33	33"	34 1/2"	24"	1 (Bifold)	0	2 (Turntables)
	LZS3612	36"	34 1/2"	24"	1 (Bifold)	0	2 (Turntables)

Specialty Base Cabinets							
Image	Product	Width	Height	Depth	Doors	Drawers	Shelves
	BES09	9"	34 1/2"	24"	0	0	2
	BMC30	30"	34 1/2"	24"	0	1	0
	BWBKT18	18"	34 1/2"	24"	0	2	0
	<b>Note: Trash cans for inside the cabinet are sold separately.</b>						
	SP09	9"	34 1/2"	24"	0	1	3







Short Wall Cabinets						
Image	Product	Width	Height	Depth	Doors	Shelves
	W2412	24"	12"	12"	2	0
	W3012	30"	12"	12"	2	0
	W3312	33"	12"	12"	2	0
	W3612	36"	12"	12"	2	0
	W1218	12"	18"	12"	1	0
	W1518	15"	18"	12"	1	0
	W1818	18"	18"	12"	1	0
	W2118	21"	18"	12"	1	0
	W2418	24"	18"	12"	2	0
	W2718	27"	18"	12"	2	0
	W3018	30"	18"	12"	2	0
	W3318	33"	18"	12"	2	0
	W3618	36"	18"	12"	2	0
	W2424	24"	24"	12"	2	1
	W3024	30"	24"	12"	2	1
	W3324	33"	24"	12"	2	1
	W3624	36"	24"	12"	2	1

Short Corner Wall Cabinets						
Image	Product	Width	Height	Depth	Doors	Shelves
	WDC241812	24"	18"	12"	1	0

Deep Wall Cabinets						
Image	Product	Width	Height	Depth	Doors	Shelves
	W361227	36"	12"	27"	2	0
	W361527	36"	15"	27"	2	0
	W361827	36"	18"	27"	2	0
	W362427	36"	24"	27"	2	1

Range Hood Cover						
Image	Product	Width	Height	Depth	Doors	Shelves
	RH36	36"	36"	24"	0	0

Wall Shelves						
Image	Product	Width	Height	Depth	Doors	Shelves
	WEOS0930	9"	30"	12"	0	2
	WEOS0936	9"	36"	12"	0	2
	WEOS0942	9"	42"	12"	0	3



Wall Microwave Cabinet						
Image	Product	Width	Height	Depth	Doors	Shelves
	WMC3018	30"	18"	12"	0	1

Wine Rack						
Image	Product	Width	Height	Depth	Doors	Shelves
	WRC3018	30"	18"	12"	0	0

Glass Holder						
Image	Product	Width	Height	Depth	Doors	Shelves
	GH30	30"	1 1/2"	12"	0	0

FLOATING SHELF - WHITE OAK - WO FS3012  
 WO FS3612  
 WO FS4812

- WALNUT - WN FS3012  
 WN FS3612  
 WN FS4812

Pantry Cabinets								
Image	Product	Width	Height	Depth	Doors	Drawers	Shelves	
	WP188427	18"	84"	27"	2	0	3	
	WP189027	18"	90"	27"	2	0	3	
	WP189627	18"	96"	27"	2	0	4	
	WP248427	24"	84"	27"	4	0	3	
		WP308427	30"	84"	27"	4	0	3
	WP249027	24"	90"	27"	4	0	3	
		WP309027	30"	90"	27"	4	0	3
	WP249627	24"	96"	27"	4	0	4	
		WP309627	30"	96"	27"	4	0	4



Double Oven Cabinets							
Image	Product	Width	Height	Depth	Doors	Drawers	Shelves
	OVD338427	33"	84"	27"	2	1	0
	OVD339027	33"	90"	27"	2	1	0

Counter Linen Cabinets							
Image	Product	Width	Height	Depth	Doors	Drawers	Shelves
	CL156012	15"	60"	12"	1	2	3

Vanity Base Cabinets							
Image	Product	Width	Height	Depth	Doors	Drawers	Shelves
	VAN24	24"	34 1/2"	21"	2	1 (False)	0
	VAN30	30"	34 1/2"	21"	2	1 (False)	0

Vanity Base Cabinets							
Image	Product	Width	Height	Depth	Doors	Drawers	Shelves
	VSB36	36"	34 1/2"	21"	2	2 (False)	0

Vanity Base Cabinets							
Image	Product	Width	Height	Depth	Doors	Drawers	Shelves
	VAN36DL	36"	34 1/2"	21"	2	2 & 2 (False)	0
	VAN42DL	42"	34 1/2"	21"	2	2 & 2 (False)	0

Vanity Base Cabinets							
Image	Product	Width	Height	Depth	Doors	Drawers	Shelves
	VAN36DR	36"	34 1/2"	21"	2	2 & 2 (False)	0
	VAN42DR	42"	34 1/2"	21"	2	2 & 2 (False)	0







Dishwasher Panel				
Image	Product	Width	Height	Depth
	DWP3	3"	34 1/2"	24"

Panels				
Image	Product	Width	Height	Depth
	SIDE PANEL 36X96	96"	36"	1/2"
	SKIN PANEL 36X96	96"	36"	3/16"

Toe Kick				
Image	Product	Width	Height	Depth
	TK8	96"	4 1/2"	3/16"

Base Molding				
Image	Product	Width	Height	Depth
	BASEMOLDING	96"	4 3/8"	3/4"

Shoe Molding				
Image	Product	Width	Height	Depth
	SHOEMOLDING	96"	1 1/2"	1 1/2"

Scribe Molding				
Image	Product	Width	Height	Depth
	SCRIBEMOLDING	96"	3/4"	1/4"

Inside Corner Molding				
Image	Product	Width	Height	Depth
	ICM8	96"	1/2"	1/2"

Angle Molding				
Image	Product	Width	Height	Depth
	ANGLEMOLDING	96"	3/4"	3/4"

Crown Molding				
Image	Product	Width	Height	Depth
	CCM8	96"	3"	4 1/4"

Crown Molding				
Image	Product	Width	Height	Depth
	ACM2.5	96"	2"	3 1/2"



Traditional Light Rail Molding				
Image	Product	Width	Height	Depth
	TLR8	96"	1 1/2"	2 1/4"

Base Decorative Door				
Image	Product	Width	Height	Depth
	BDD24	23 3/4"	29 1/4"	3/4"

Wall Decorative Door				
Image	Product	Width	Height	Depth
	WDD30	11 7/8"	29 1/2"	3/4"
	WDD36	11 7/8"	35 1/2"	3/4"
	WDD42	11 7/8"	41 1/2"	3/4"

Glass Door				
Image	Product	Width	Height	Depth
	WG1230	12"	29 1/2"	3/4"
	WG1530	15"	29 1/2"	3/4"
	WG1830	18"	29 1/2"	3/4"
	WG1236	30"	35 1/2"	3/4"
	WG1536	36"	35 1/2"	3/4"
	WG1836	42"	35 1/2"	3/4"
	WG1242	41 1/2"	41 1/2"	3/4"
	WG1542	41 1/2"	41 1/2"	3/4"
	WG1842	41 1/2"	41 1/2"	3/4"
	WDCG243012	14 5/8"	29 1/2"	3/4"
	WDCG243612	14 5/8"	35 1/2"	3/4"
	WDCG244212	14 5/8"	41 1/2"	3/4"

Sample Door				
Image	Product	Width	Height	Depth
	SAMPLE DOOR	12"	15"	3/4"
	SAMPLE DOOR PACK	13"	17"	7"

Corbels				
Image	Product	Width	Height	Depth
	CORBEL 8X12	8"	12"	3"

Leg Posts				
Image	Product	Width	Height	Depth
	DLS 4X4X36	4"	34 1/2"	4"

Knee Drawer				
Image	Product	Width	Height	Depth
	DSK2421	24"	7 1/2"	21"
	DSK3021	30"	7 1/2"	21"

Pullout Tray				
Image	Product	Width	Height	Depth
	PULLOUT TRAY 18"	18"	4"	21"
	PULLOUT TRAY 24"	24"	4"	21"
	PULLOUT TRAY 30"	30"	4"	21"
	PULLOUT TRAY 36"	36"	4"	21"



Trash Can				
Image	Product	Width	Height	Depth
	Trash Can	14 1/8"	15 1/2"	9 15/16"

Spray Paint				
Image	Product	Width	Height	Depth
	PAINT	2 1/2"	8"	2 1/2"

Touch Up Kit (Paint Pen & Putty Stick)				
Image	Product	Width	Height	Depth
<p>Putty Stick</p> <p>Paint Marker</p> <p>Package Dimensions: 6 1/2" W x 1 1/4" H x 2" D</p>	TOUCH UP KIT	6 1/2"	1 1/4"	2"

# ENTERPRISE INTRODUCTION

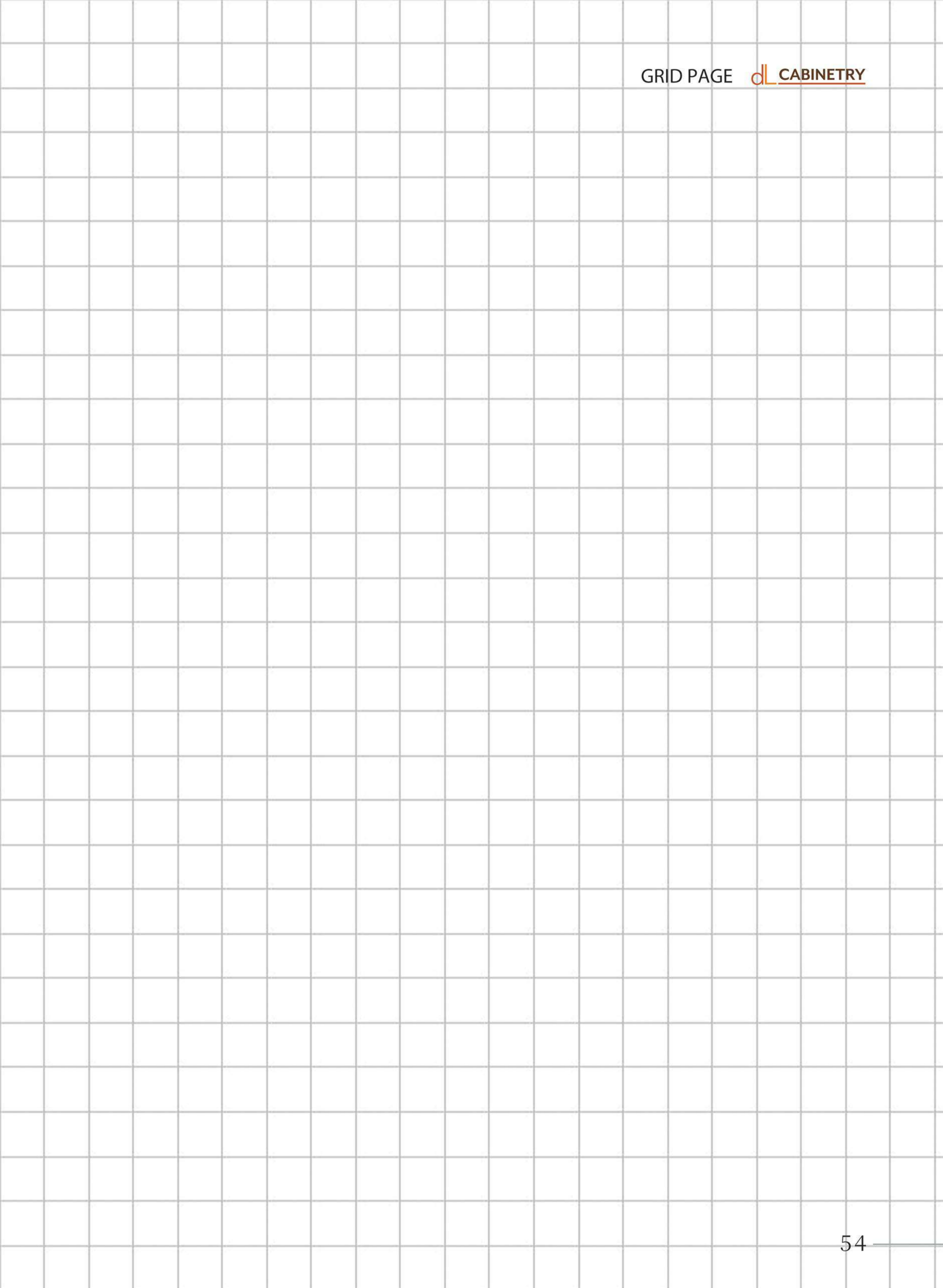
Since 2005, DL Cabinetry has evolved into a prominent manufacturer of kitchen and bathroom cabinets. Our commitment to delivering top-notch products at competitive prices enables us to offer our customers a premium product with exceptional value.

With a network of distribution centers and showrooms throughout the Southeastern United States, we uphold substantial inventory levels, ensuring we meet our customers' needs and significantly reduce the risk of products being unavailable.

At DL cabinetry our core objective is to provide professionals and homeowners with unparalleled quality products at unbelievable prices with unrivaled convenience.







## Measurement Guide

### Before You Start

- Record all measurements in inches (do not round)
- Make sure that all recorded measurements are clearly legible
- Assign one person to determine and record all measurements

### Record Ceiling Heights & Wall Lengths

- Draw an outline of the room
- Record the ceiling height on your outline
  - Measuring from the floor to the ceiling or base of the soffit
- Record the wall lengths on your outline
  - Start in one corner of your project area and measure to an adjacent wall
  - Continue around the room until all necessary walls have been measured

### Measure Windows

- Include all window trim as part of the measurements for windows
- Measure and record each window's width, height, and the distance from the window to the floor on the outline
- Add window locations to your outline
  - Start at the corner of any wall that contains a window and measure to the outside trim or edge of the window
  - Continue around the room until all necessary windows have been added to your layout

### Measure Appliances

- Measure or research and record the width, height, and depth of your sink and all appliances
- Add the sink location to your outline
  - Start at the corner of the sink wall and measure to the center of your sink
- Add the appliance locations to your outline
  - Note the location of your dishwasher in relation to your sink (left or right) if applicable
  - Start at the corner of the range wall and measure to the edge of your range
  - Start at the corner of the refrigerator wall and measure to the edge of your refrigerator

### Room Outline Example

